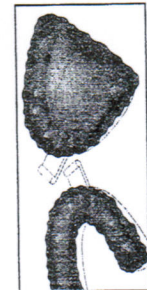
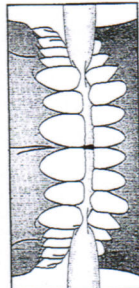


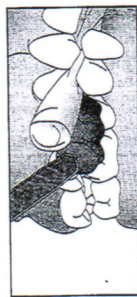
## IMPRESSION AND BITE REGISTRATION GUIDELINES



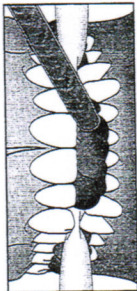
Using the manufacturer's guide for proper powder-to-water ratio, take impression of both arches.



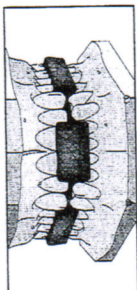
A quick bite technique is to place two cotton rolls behind the cusps and guide patient into centric relation.



With patient in open centric relation, inject bite registration into the posterior opening of both quadrants.



Next, inject bite registration into anterior opening to capture a complete open construction bite at centric relation.



Stone models mounted with open construction bite. Note the opening between anterior teeth.

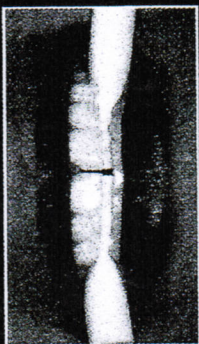
## Technique to minimize bite splint occlusal adjustments



Using the manufacturer's guide for proper powder-to-water ratio, take impression of both arches.



Instruct patient to close into centric relation to verify midline position and bite.



A quick bite technique is to place two cotton rolls behind the cusps and guide patient into centric relation.



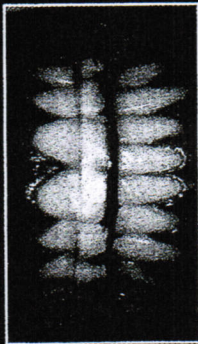
With patient in open centric relation, inject bite registration into the posterior opening of both quadrants.



Next, inject bite registration into anterior opening to capture a complete open construction bite at centric relation.



Stone models mounted with open construction bite. Note the opening between anterior teeth.



Seat splint and evaluate fit and retention. Adjust with carbide bur or Lisko-S disc; polish if needed.



After seating, check bite with marking tape to identify premature occlusion; adjust and polish.